



Arab-American Family Support Center
المركز العربي الامريكى للخدمات الاجتماعية

ANNUAL REPORT 2017

Empowering immigrant, refugee, and low-income
communities across New York City and beyond since 1994

DEAR FRIENDS, SUPPORTERS, AND COMMUNITY MEMBERS

Resilience. This is our word for 2017 and beyond. In these troubling times of increasing xenophobia, the Arab-American Family Support Center's youth and families continue to demonstrate unwavering commitment to overcoming barriers and achieving their dreams.

Thanks to you, our generous supporters, we are able to provide vital support to over 6,000 immigrants, refugees, and low-income individuals across New York City and beyond amidst this challenging climate. For nearly 25 years, the Arab-American Family Support Center (AAFSC) has welcomed our city's most vulnerable with open arms through our culturally and linguistically-specific, trauma-informed care. In 2017, we continued to provide not only our exemplary, wrap-around social services for youth and families, but also, a sense of hope, optimism, and possibility. Without your support, this work would not be possible.

This year, as we have for nearly 25 years, we helped newly arrived immigrants learn English and pass citizenship tests. We empowered the youth in our community with after school programming and in-school case management. We supported individuals in finding affordable health care options, in addressing domestic violence, and in keeping children with their families.

In 2017, we expanded to 2 new boroughs through our partnerships with the Bronx and Manhattan Family Justice Centers. Now located at 8 sites across all 5 boroughs of New York City, we are assisting more individuals than ever to heal from various forms of trauma, acclimate to their new homes, and get ready to learn, work, thrive, and give back to their communities.

In addition to our core programming, we instituted new initiatives in response to a community needs assessment. Identifying a gap in services, we created the New Immigrants and Refugees Fund, allowing us to help refugee families across the country reduce the burden of their exorbitant travel loans. We also established a mental health initiative in collaboration with community members to help them overcome the devastating mental health impacts of migration, racism, and stigma.

Yes, we are confronting a daunting climate. Our communities are facing immense challenges. There is no doubt. However, if you walk through the bustling halls of our Downtown Brooklyn office and ask one of our constituents, "How are you today?" you will not hear about strife, but about gratitude. Our community members are grateful to find refuge in the United States, to reunite with family members, and to embrace educational opportunities.

We are inspired by the resilience of our community members and we are honored to serve them. We, too, are grateful—grateful to our committed board of directors, dedicated staff, volunteers, donors, friends, and family for allowing us to make our mission possible. With your support, we will continue to mobilize our communities and find strength in optimism and diversity.

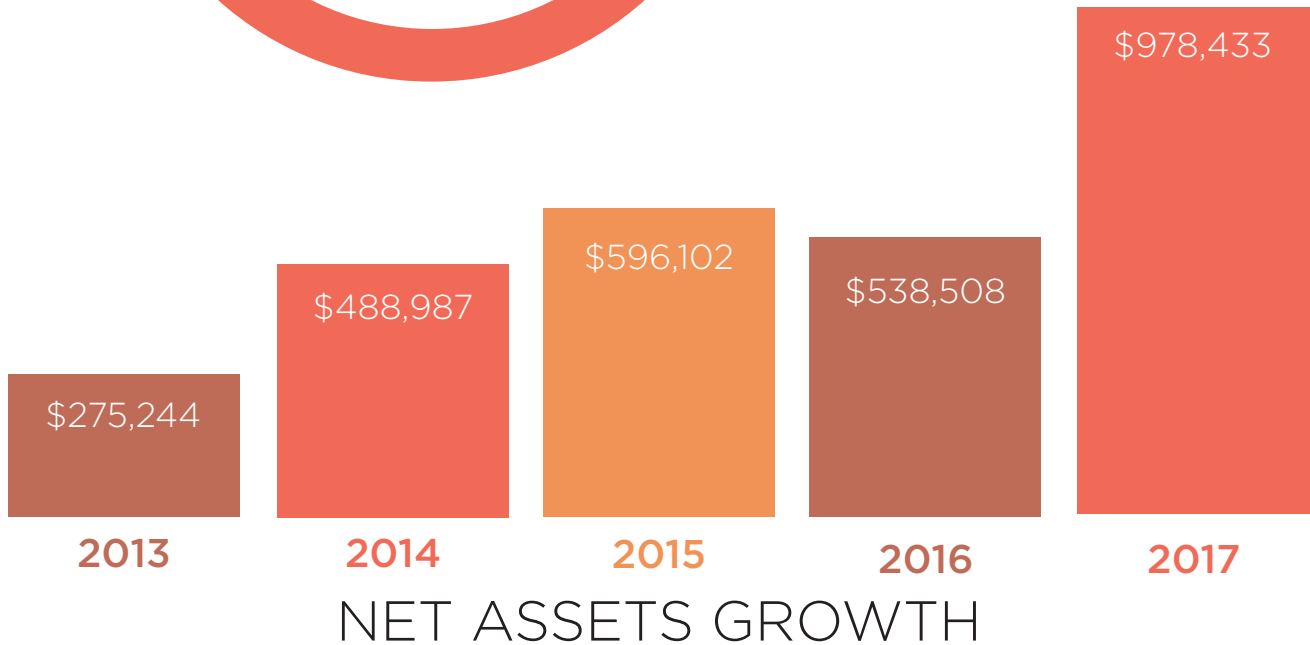
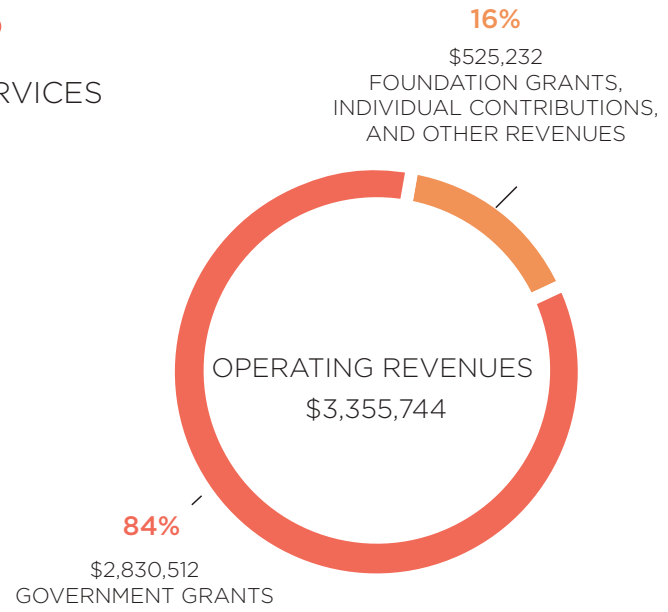
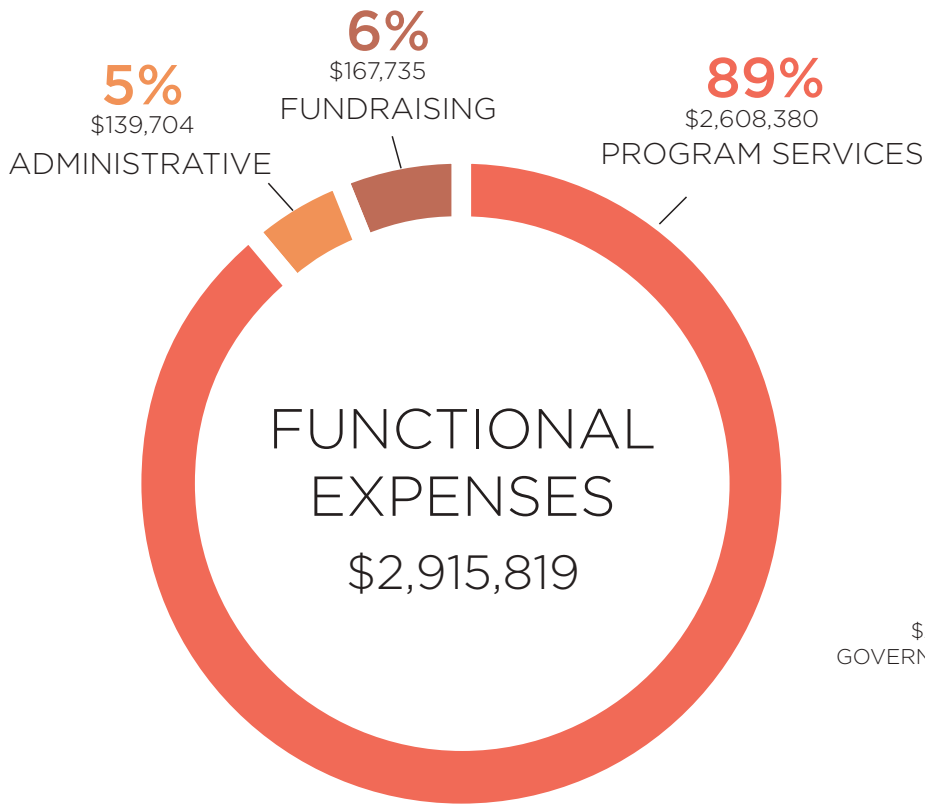
Our doors are always open for anyone in need.

Sincerely,

Rawaa Nancy Albilal
President & CEO



FINANCIAL HIGHLIGHTS



Visit www.aafscny.org to view our audited financial statements, full balance sheets, Form 990 & more

OUR MISSION

We empower new immigrants with the tools they need to successfully acclimate to the world around them and become active participants in their communities.

WHO WE ARE

The Arab-American Family Support Center is a 501(c)3 non-profit, non-sectarian settlement house organization that provides culturally and linguistically specific services to low-income immigrant communities in New York City and beyond.

We are an active and proud member of the United Neighborhood Houses (UNH), a collective of 38 settlement organizations that promotes and strengthens the neighborhood-based, multi-service approach to improving the lives of New Yorkers in need and the communities in which they live.

In the settlement house tradition, we are geographically embedded in the communities we serve and our staff reflect the diversity of our participant base. Our 60 staff members speak 13 languages and 23 dialects to ensure we provide effective, accessible, and trauma-informed care to our children and families.

OUR COMMUNITIES

We serve anyone who walks through our doors. However, in our nearly 25 years of experience we have developed expertise in serving low-income children and families from the Arab, Middle Eastern, Muslim, and South Asian (AMEMSA) immigrant communities of New York City.

6,000

Lives impacted by AAFSC each year

75%

In a Pew Research Center survey conducted in early 2017, 75% of Muslim American adults said there is "a lot" of discrimination against Muslims in the U.S.. In 2016, the F.B.I. reported that hate crimes against Muslims increased from 2014 to 2015 by **67%** percent.

58,000

Recent Arab immigrants living in NYC in 2011, with **41%** living in Brooklyn

13

Languages spoken by our 60 staff members including Arabic, Bengali, Farsi, Hindi, Nepali, Pashto, Punjabi, Tibetan, and more. We also speak 26 local dialects.

3RD

Arabic is the 3rd most widely spoken language among English Language Learners in NYC public schools

8

AAFSC offices, located across all 5 boroughs of NYC.

Sources:

- Office of English Language Learners: 2013 Demographic Report. NYC Department of Education
- The Newest New Yorkers: Characteristics of the City's Foreign-born population. NYC Department of City Planning. 2013.
- U.S. Muslims Concerned About Their Place in Society, but Continue to Believe in the American Dream. Pew Research Center. 2017.
- Hate Crime Statistics, 2015. The Federal Bureau of Investigation: Criminal Justice Information Services Division. 2016.

OUR IMPACT

Our programs are comprehensive and intergenerational. We provide 6 core culturally and linguistically-specific social service programs with a trauma-informed approach, ensuring our communities have access to the resources they need to build strong and healthy homes and families. Here's a glance at our impact in 2017:



1,023

Women and girls supported through our Anti-Violence Program.

We empower survivors of domestic violence, dating violence, sexual assault, and stalking through crisis intervention, individual counseling, and more. We also conduct community outreach and cultural competency trainings for fellow service providers.



180

Families supported and strengthened through our Preventive Services Program.

We are contracted by the NYC Administration for Children's Services to provide early intervention, referrals, counseling, and parenting classes with a strengths-based approach to help families build happy, healthy homes.



76,040

Total program hours our 65 Youth Program participants received. We offer tutoring, counseling, and arts enrichment to develop our youth's skills, self-reliance, and the strong values essential to help them fulfill their potential.



67,054

Total program hours our 331 Adult Education & Literacy Program participants received. We offer English Language and Civics courses, job readiness services, and civic engagement opportunities to support new immigrants on their path to citizenship.



1,200

Individuals signed up for free and low-cost health insurance through our Health Program. We also helped 45 families enroll in SNAP. Our Health Program helps families increase food security, secure health insurance, and find culturally-competent healthcare providers.



441

Services provided in our Legal Program, including petitions for alien relative applications, Temporary Protective Status (TPS) applications, U.S. citizenship applications, and more. Our Legal Program assists recent immigrants as they navigate the U.S. justice system. Most importantly, we are reuniting relatives and helping families stay together.

OUR MISSION IN ACTION FOR 2017



THE NEW IMMIGRANTS AND REFUGEES FUND

The Kanj family, pictured above, fled the war in Syria to arrive in the U.S. burdened with debt from their airfare. The average refugee family arrives to the U.S. with \$5,000 of debt to the International Office on Migration (IOM). We started **the New Immigrants and Refugees Fund** this year to help families like the Kanjs. Our Fund is open to individuals nationwide. In 2017, we assisted 47 refugee families—with 125 individuals overall.



TAKING A STAND

Our Youth Program organized several rallies this year to address growing rates of anti-Muslim bigotry and discrimination. Our youth activists, some as young as 8, were featured in major media outlets including Mic.Com, BRICTV, Teen Vogue, and more.

STATEMENT OF ACTIVITIES

Changes in Unrestricted Net Assets Revenues, Gains, and Other Support

	FY 2017 JULY 1, 2016 - JUNE 30, 2017	FY 2016 JULY 1, 2015 - JUNE 30, 2016
Government Grants	\$ 2,830,512	2,602,079
Foundation Grants	470,780	180,502
Individual Contributions	45,182	40,637
Special Events		53,146
Other	9,270	1,970
Total Unrestricted Support	\$ 3,355,744	2,878,334

Functional Expenses

Program Services		
Preventive Services Program	\$ 1,767,216	1,814,053
Anti-Violence Program	310,102	225,066
Youth Program + Adult Education & Literacy Program	390,041	246,747
Health Program, Legal Services Program, and other services	141,021	342,515
Total Program Services	2,608,380	2,628,381

Supporting Services		
Management and Administrative	\$ 139,704	144,185
Fundraising	167,735	163,362
Total Supporting Services	307,439	207,547

Total Functional Expenses	\$ 2,915,819	2,935,928
Change In Net Assets	\$ 439,925	-57,594

BALANCE SHEET

	FY 2017	FY 2016
CURRENT ASSETS		
Cash & eash equivalents	\$ 399,732	384,115
Grants & donations recieveable	675,970	239,817
Security deposit	14,140	14,140

Total Current Assets	\$ 1,089,842	638,072
-----------------------------	---------------------	----------------

CURRENT LIABILITIES		
Accounts Payable	\$ 111,409	99,564

NET ASSETS		
Unrestricted	\$ 978,433	538,508

Total Liabilities and Net Assets	\$ 1,089,842	638,072
---	---------------------	----------------

GOVERNMENT, FOUNDATION, AND CORPORATE SUPPORTERS

Anonymous
Access Health
Arthur Ashe Institute for Urban Health
Atlantic Philanthropies
Brooklyn Arts Council
Brooklyn Community Foundation
Brooklyn Friends School
Coalition for Asian American Families and Children
CAAP, a project of ACCESS
The Center for Student Missions
Child Welfare Fund
The Cowles Charitable Trust
Citizen Committee of New York City
City Council Member Daniel Dromm
City Council Member Mathieu Eugene
City Council Member Stephen Levin
Deutsche Bank
The Durst Family Foundation
Emily Davie & Joseph S. Kornfeld Foundation
Goldman Sachs Gives
The Ginder Family Foundation
The Harman Family Foundation
The Hearst Foundations
Investor's Bank
The Lily Auchincloss Foundation
LitWorld
Maimonides Medical Center
The Marilyn Simpson Charitable Trust
The McCarthy Family Foundation
NNAAC, a project of ACCESS
The New School
New York Life Foundation
NYC Department of Youth and Community Development
NYC Division of Criminal Justice
NYC Mayor's Office of Criminal Justice
New York State Department of Health
NYU Langone
NYC Administration for Children's Services
NYC Council's Adult Literacy Initiative
NYC Council's Domestic Violence and Other Violence Emergencies (DoVE) Initiative
New York City Council's Non-Profit Stabilization Fund
New York City Council's Speaker's Initiative

New York City Council's Young Women's Initiative
New York City Health and Hospital Corporation
New York Community Trust
New York Immigration Coalition
New York Women's Foundation
New York State Office of Child and Family Services
New York State Office of Victim Services
Northern Trust Charitable Trust
Packer Collegiate Institute
The Pinkerton Foundation
Richmond County Savings Bank Foundation
The Robert M. Schiffman Foundation
Rockefeller Philanthropy Advisors
Russell Grinnell Memorial Trust
SUNY
Saint Ann's School
The Shelley & Donald Rubin Foundation
U.S. Department of Justice
United Neighborhood Houses
The Violet Jabara Charitable Trust
The William T. Grant Foundation
Wish You Well Foundation

INDIVIDUAL DONORS

PLATINUM LEVEL

Anonymous (1) • Abigail Disney • Aaron Harnly • Patricia Salmon • Betsy Haddad

GOLD LEVEL

Ryan and Carla Norris • Lucy Waletzky • Rita Gail Johnson • Myra Al-Rahim • Ziad Mansouri & Fatima Shama

SILVER LEVEL

John Abi-Habib • Rawaa Nancy & Pablo Albilal • Elizabeth Jebara • Mayhsin Hsiung • Gerlinde Schwarz • Joseph Steinberg • Anton Fallah • Deena Emera and Sherief Meleis • Christine Moore Vassallo • Scott Chesin • Susan Weltman • Stephen Warnke

BRONZE LEVEL

Mahmoud Agha • Jacob Agus-Kleinman • Sandeena Ahmed • Nilofer Ahsan • Lena Alhousseini • Stephanie Anderson • Maha Attieh • Andrea Axelrod • Tita Beal • Carol Bellamy • Karen Benker • Anneke Berken • Evelyn Berry • Johanna Bjorken • Robin Blossvern-Ruddy • Siobhan Boes • Zachary Boger • Elizabeth Botticelli • Eric Brettschneider • Taryn Brodlieb • Chloe Brown • Kathy Bruce • Carol J. Burger • Susan Bynum • Cori Carl • Murphy Carter • Mary Cavalier • Christina Cavoures • Lina Chen • Nicole Cieslewicz • Brandon Clarke • Kirsten Cole • Emily Coleman • Jeffrey Conrath • Allison Corbett •

BRONZE LEVEL (CONTINUED)

Mari Cossaboom • Linda Cox • Eva Davis • Pranjali Desai • Liz DeWolf • Graham Dickson • Kevin Douglas • Joseph Dudas • Grace Duggan • Beth Dunlap • Alexa Eccles • Matthew Edelman • Jenny Eisenberg • Donnamarie El Hassan • Frances Elston • Rebecca Fadil • Tayef Farrar • Daniela Feibusch • Fredric Feibusch • Robert Ferguson • Henry Fernaine • Elizabeth Fournier • Marilyn Fraser-White • Anna Freeman • Marge Frosch • Joseph Gabriel • Treacy B. Gaffney • Mary Geraghty • Grant Ginder • Lauren Glant • Harriet Goldberg • Aviva Goldstein • Judith Gould • Kate Gronner • Naseem Haffar • Denise Harnly • Elizabeth Harrell-Edge • Susan Harris-Edwards • Abbie Hebein • George Helfrich • Lisa Heller • David Herron • Susan Herron • Cara Hirsch • Michael Hirschhorn • Cary Hixon • Timothy Hoagland • Amy Hopwood • Lori Hren • Fatima Imran • Mala Iqbal • Rama Issa-Ibrahim • Robert Jaffe • Steven Jervis • Nils Johnson • Karen Johnson • Jane Johnston • Amanda Jones • Mona Karim • Melinda Karp • Jacob Karr • Philip Kassen • Mary Kim • Jisu Kim • Louise Knight • Dr. Jeremy Kohomban • Jean Lee • Joseph Lee • Saranya Lee • Harold Levine • Jonathan Lipsmeyer • Magdalena Long • Felicity Loomie • Eliza Loomis • Ruth Lyons • Margaret MacCary • Clare Manias • Natalie Maroni • Jill Martin • Leslie Martinez • Tanya Mauler • Hannah McIntire • Calvin Mew • Sumaira Mian • Katie Miles • Sarah Milstein • Virginia Moffatt • Anne Mourier • Julie Munro • Mahmud Mustafa • Kathy Najimy • Lila Nazar de Jaucourt • Zachary Newick • John Paul Newport • Esther Nieves • Deborah Nilson and Peter Wise

BOARD OF DIRECTORS

CHRISTINE MOORE VASSALLO, SECRETARY
NASEEM HAFFAR, TREASURER

TONY KUTAYLI
DAVID POLLAK
ASSAD JEBARA
RITA GAIL JOHNSON

LEADERSHIP TEAM

RAWAA NANCY ALBILAL, PRESIDENT AND CHIEF EXECUTIVE OFFICER

HANNAH MCINTIRE, SENIOR DIRECTOR OF CAPACITY BUILDING AND ORGANIZATIONAL LEARNING

HIZAM WAHIB, SENIOR DIRECTOR OF OPERATIONS AND LEGAL SERVICES

ARIJ ABUL - HALIM, DIRECTOR OF PREVENTIVE SERVICES, QUEENS

CYRUS ROEDEL, DIRECTOR OF PREVENTIVE SERVICES, BROOKLYN

BROOKLYN STAFF

PREVENTIVE SERVICES PROGRAM
SHAGUFTA SHAH, PREVENTIVE SUPERVISOR, BROOKLYN
LEANN TADROS, CONTINUOUS QUALITY CONTROL SPECIALIST
MARCUS "SALEH" CLEMONS, CULTURAL BROKER
BROOKLYN CASE PLANNERS:
ASHOK KARKI
YASMIN ABDOU
TARIK TABBAKH
MOAMEN AHMED
ROSELYN BHOWMIK
LABIBA ADIL

ADULT EDUCATION & LITERACY PROGRAM

NIDAL ALOUBANE, DIRECTOR OF READINESS INITIATIVES
PAUL MCKENNEY, ADULT EDUCATION & LITERACY PROGRAM MANAGER
ESL INSTRUCTORS:
KATHLEEN RYAN
HARRIET GOLDBERG

LEGAL PROGRAM

J.C. SALTER, STAFF ATTORNEY

HEALTH PROGRAM

MAHA ATTIEH, HEALTH PROGRAM DIRECTOR
DANIA DARWISH, COMMUNITY-BASED PUBLIC HEALTH TECHNICAL ADVISOR
BANA ALANI, HEALTH PROGRAM NAVIGATOR/FRONT DESK ADMIN.
NAVIN SARHAN, SNAP COORDINATOR & CULTURAL BROKER

MAJOR PARTNERS, COLLABORATORS, AND COALITIONS

PARTNERS AND COLLABORATORS

American-Arab Anti-Discrimination Committee
CUNY CLEAR
Khalil Gibran International Academy
Lutheran Immigration and Refugee Services
LitWorld
Maimonides Medical Center
National Council for Behavioral Health
New York Cares
NYC Mayor's Office to Combat Domestic Violence
Peaceful Families Project
Take on Hate, a project of NNAAC
Tahirih Justice Center
Tradition in Motion: Dabke

COALITIONS

Advocates for Safe and Empowering Relationships Coalition
Coalition for Asian American Children and Families
Coalition for Health Access to Reach Greater Equity
Greater Brooklyn Health Coalition
The Human Services Council
International Federation of Settlement Houses
National Network for Arab American Communities
New York Immigration Coalition
New York City Alliance Against Sexual Assault
New York City Coalition for Adult Literacy
New York State Anti-Trafficking Coalition
New York State Coalition Against Domestic Violence
United Neighborhood Houses

IN-KIND SUPPORTERS

A Forum for Life • BJ's Wholesale • Broolyn Friends School • Chipotle • Cinema Village • Delivering Good • Hack the Ban • Layali Dubai • Le Sajj Restaurant • Lilac Chocolates • Muslim Community Network • Packer Collegiate Institute • Tanoureen • New York Cares • New York Cares - Winter Wishes • Secure Watch 24 (SW24) • Saint Ann's School • Yemen Cafe

YOUTH PROGRAM

TYEAST FULLERTON, DIRECTOR OF YOUTH DEVELOPMENT
MOHAMMAD BARAKAT, ASSOCIATE DIR. OF YOUTH DEVELOPMENT
NORA MAHMOUD, YOUTH PROGRAM MANAGER
SARAH CLEM, COUNSELOR ADVOCATE & CULTURAL BROKER
YOUTH PROGRAM GENERALISTS:
OMAR EBID
DARYL MEADOR
KELLEY O'DELL
AMANDA BERTHELOT

ADMINISTRATIVE STAFF

CYNTHIA SEAY, FRONT DESK ADMINISTRATOR

CAPACITY BUILDING AND ORGANIZATIONAL LEARNING

KERRY SESIL, ASSOCIATE DIRECTOR OF CAPACITY BUILDING AND ORGANIZATIONAL LEARNING
SUMAIRA MIAN, DEVELOPMENT AND COMMUNICATIONS ASSOCIATE

QUEENS PREVENTIVE SERVICES PROGRAM (CONT.)

QUEENS CASE PLANNERS:
SALHIYA GHANI
KUNCHOK CHODAK
NOSHAD AZAD
EMMA GEEGBAE
SAHA SHUVONKAR
HALIMA RAFIK
YASMIN GANAIM
SANJIDHA AKHTHAR
ADIUZ AZAD
NAZRUL ISLAM
WAHEDA ISLAM

NEW IMMIGRANTS AND REFUGEES FUND/ COMMUNITY OUTREACH

AHMED ALFARAJI, DIRECTOR OF COMMUNITY OUTREACH AND PREVENTION SUPPORT

AAFSC AT THE FAMILY JUSTICE CENTERS

ANTI-VIOLENCE PROGRAM

DANNY SALIM, ANTI-VIOLENCE PROGRAM DIRECTOR
ANTI-VIOLENCE PROGRAM CASE MANAGER & ADVOCATES:
SAHAR JAAFAR
NISREEN ALJUBOURI
AMINA BIBI
ANNA BELLE NEWPORT

CONNECT WITH US

We are now located at 8 sites in all
5 boroughs of New York City.

ONLINE

WWW.AAFSCNY.ORG

AAFSC BROOKLYN HEADQUARTERS

150 COURT STREET, 3RD FLOOR
BROOKLYN, NY 11201
T: (718) 643 - 8000 // F: (718) 797 - 0410

AAFSC QUEENS OFFICE

37-10TH STREET, 2ND FLOOR
LONG ISLAND CITY, NY 11101
T: (718) 937 - 8000 // F: (347) 808 - 8778

AAFSC AT THE BRONX FAMILY JUSTICE CENTER

198 EAST 161ST STREET, 2ND FLOOR
BRONX, NY 10451
T: (718) 508 - 1220

AAFSC AT THE BROOKLYN FAMILY JUSTICE CENTER

350 JAY STREET
BROOKLYN, NY 11201
T: (718) 250 - 5035

AAFSC AT THE MANHATTAN FAMILY JUSTICE CENTER

80 CENTRE STREET
MANHATTAN, NY 10013
T: (212) 602 - 2800

AAFSC AT THE QUEENS FAMILY JUSTICE CENTER

126-02 82ND AVENUE
MANHATTAN, NY 10013
T: (718) 575 - 4500

AAFSC AT THE STATEN ISLAND FAMILY JUSTICE CENTER

126 STUYVESANT PLACE
STATEN ISLAND, NY 10301
T: (718) 697 - 4300

AAFSC AT THE KHALIL GIBRAN INTERNATIONAL ACADEMY

362 SCHERMERHORN STREET
BROOKLYN, NY 11217
T: (718) 237 - 2502

@aafscny @aafsc @aafscny

